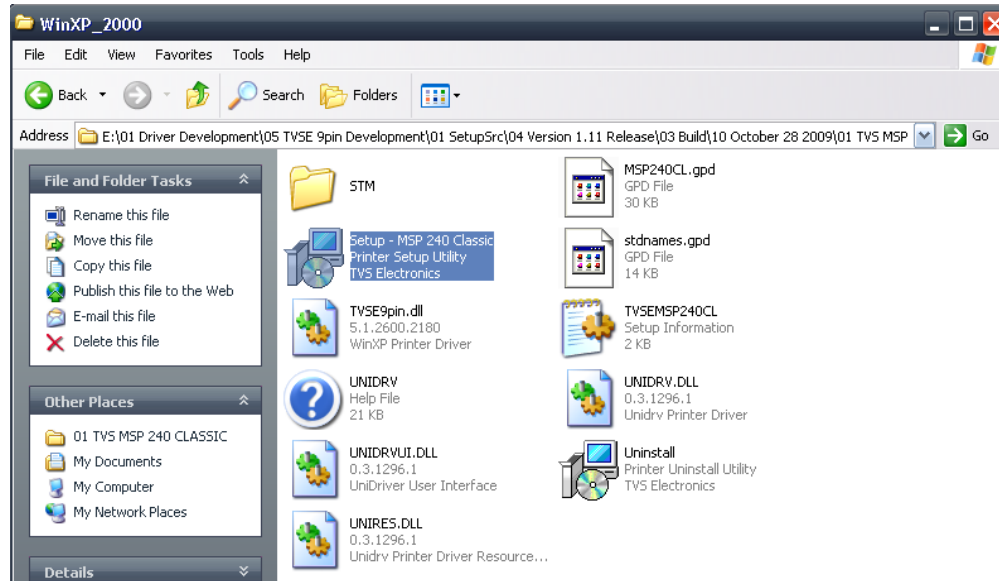
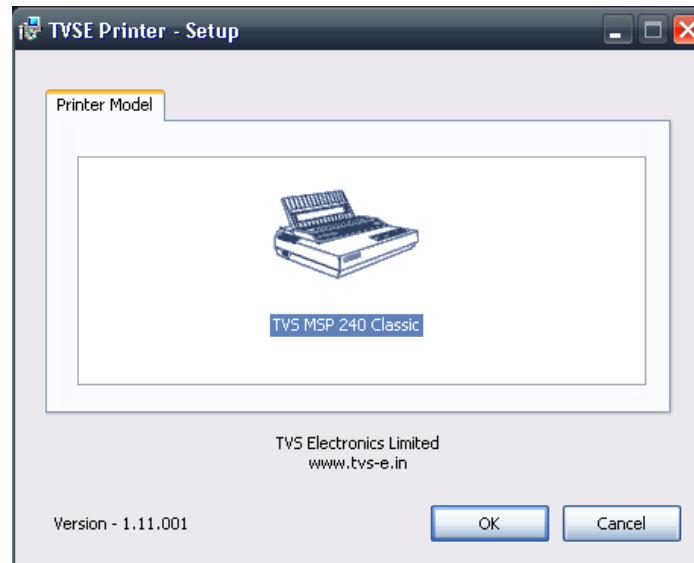


Driver Installation Procedure for TVSE MSP Series (9wire & 24wire printers)

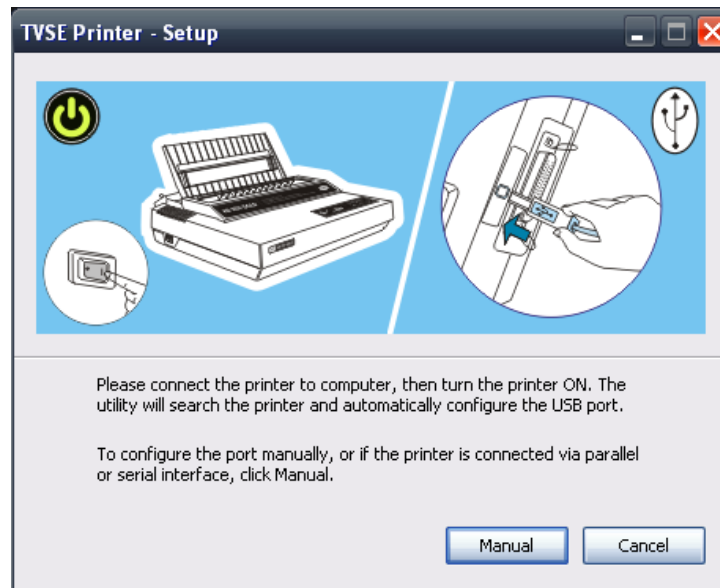
- Run the Printer Setup I h]mž Zcf'YI Ua d'Y f'GYh d'É MSP 240 Classic.exe



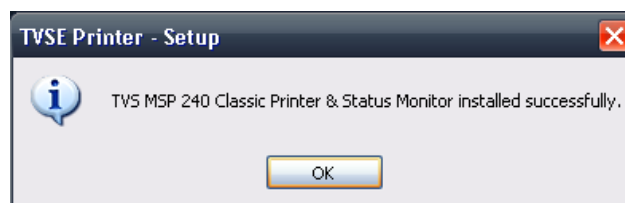
- Click Ok button



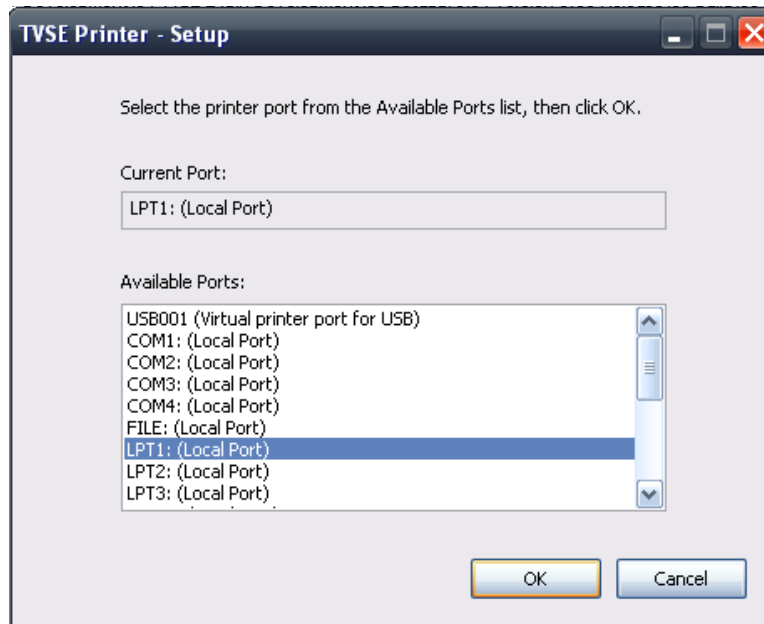
- The below search window will appear, in case of USB; connect the USB cable to the PC and Printer then switch ON the printer.
- If the printer is already switched ON, unplug the USB cable and plug in once again.
- : cf'DUFU`Y`/`GYfjU`j`bhYfZJW`WjV`fA Ubi Uf`Vi Hcb



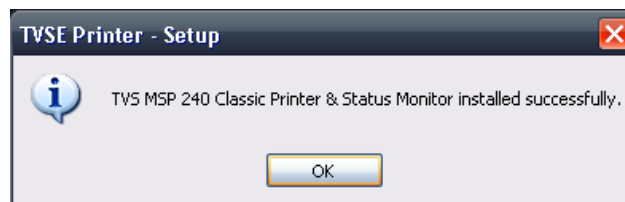
- For USB, the software will automatically search the USB Port and install the drive.
- Click Ok to complete the installation Process.



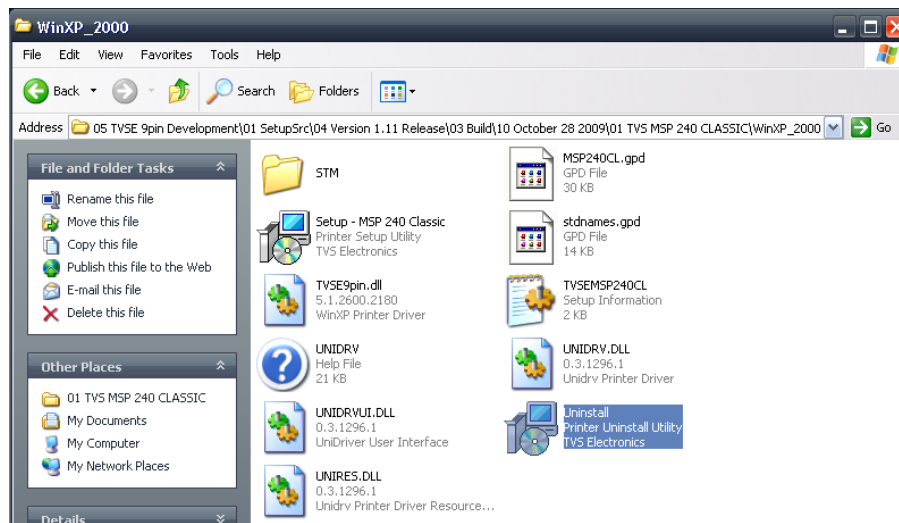
- For Parallel and Serial port choose the required port and click OK button.
- 6mXYZJi `h f @DH%` port will be selected.



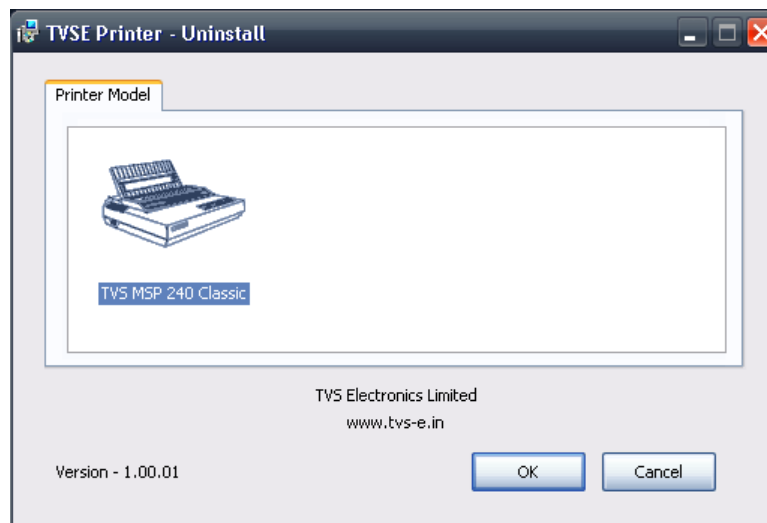
- Click Ok to complete the installation Process.



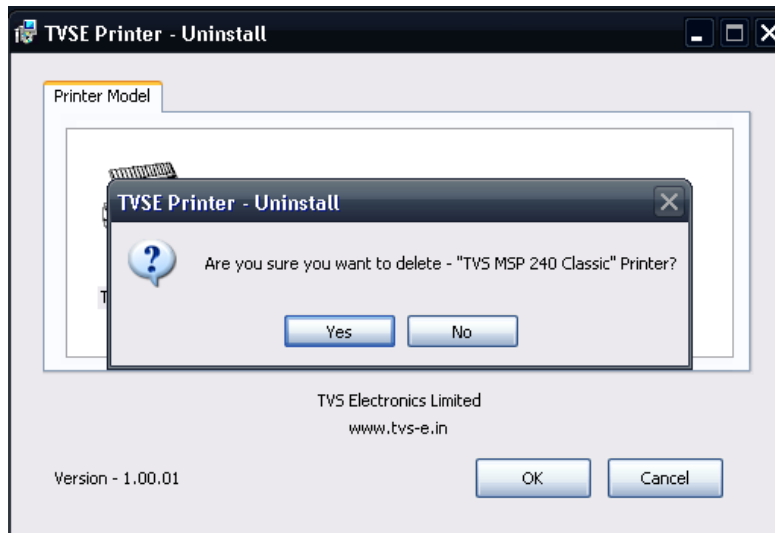
- Run the Uninstall.exe



- Double Click the Icon to un-install the driver.



- 7`JW_í N`gí`hc`V`bhjbi`Y`XY`Yhj[`h`Y`df]bhYfz`]Z`bch`WJW_í`BcÍ`hc`WbW`h`Y`dfcW`gg"



- 7]W[C_]hc`Wta d`YhY`hY`dfcWgg"

